

BLACK HAWK



centrifugal pump



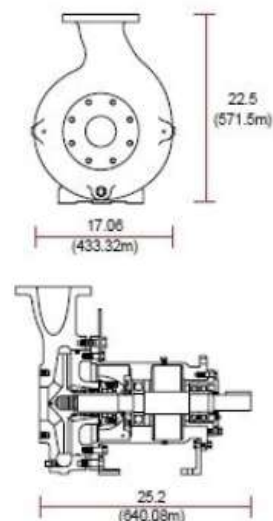
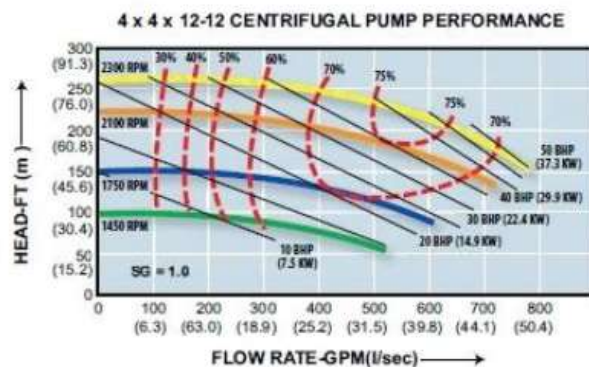
BLACK HAWK

PUMPS & SERVICES

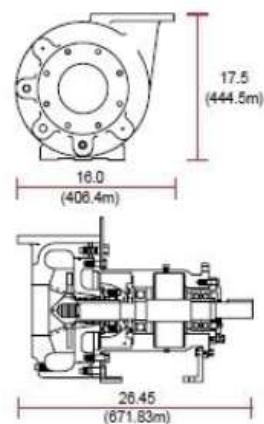
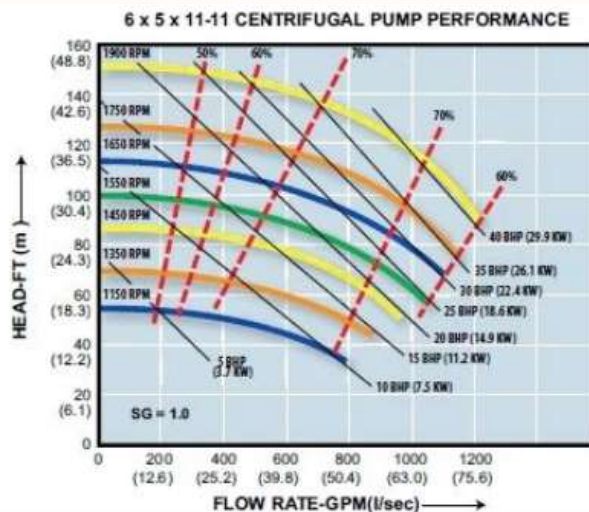
Three basic models to choose from:



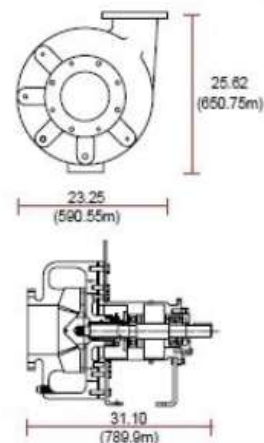
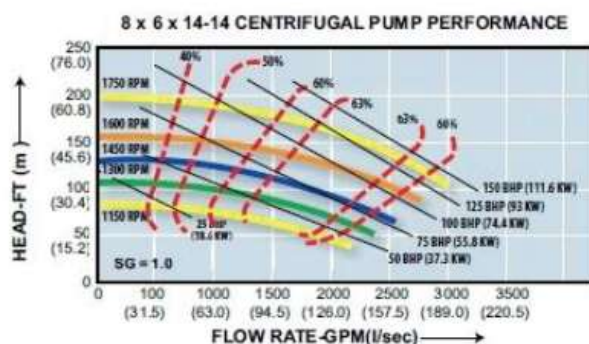
Model 350.205 Series
4" x 4" x 12"
 Up to 750 GPM and 250 Ft. Head.



Model 350.1240 Series
6" x 5" x 11"
 Up to 1200 GPM and 150 Ft. Head.



Model 350.202 Series
8" x 6" x 14"
 Up to 2700 GPM and 150 Ft. Head.



centrifugal pump

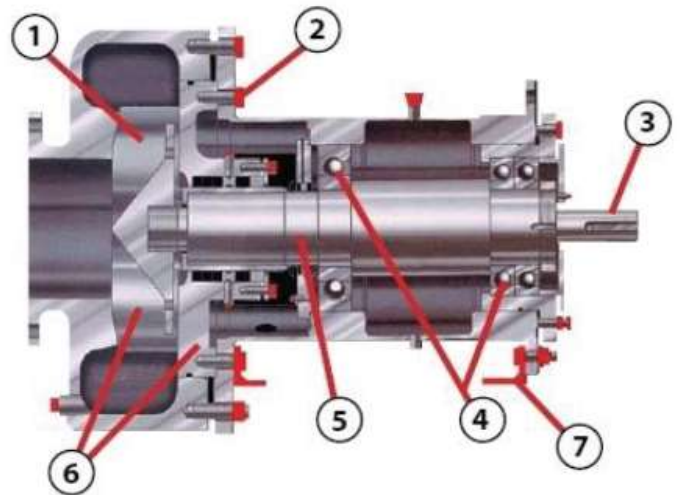
Standard Features:

- Oil Lubricated Buna-N Lip Seals Shaft Seal
- Ceramic Coated Shaft Sleeve
- Hi-Torque 4340 Steel Shaft
- 100 BHP Frame Design
- O-ring Seals (no gaskets)
- Adjustable Casing and Impeller
- Heat Treated Ductile Iron Casing and Impeller (ASTM A536, Grade 100-70-03)
- ANSI 150# Flanges
- Re-machineable Fluid End Parts (extending useful life of the pump up to three times)
- Built-in Hydraulic Adapter Flange



Design Features:

1. Open impeller with expeller vanes reduces stuffing box pressure.
2. Both impeller and casing are adjustable allowing you to maintain maximum performance.
3. The shaft's compact stout design holds shaft deflection to .001" at the stuffing box.
4. Heavy duty grease lube bearings for maximum service life.
5. Hook type shaft sleeve with hard ceramic coat provides long seal life.
6. The casing and stuffing box wear surfaces are hardened for abrasion resistance. Proven O-ring seal helps eliminate leaky messy gaskets.
7. Reposition the discharge without removing the casing. Just reposition the removable pump feet. Avoids resetting impeller and casing clearances.

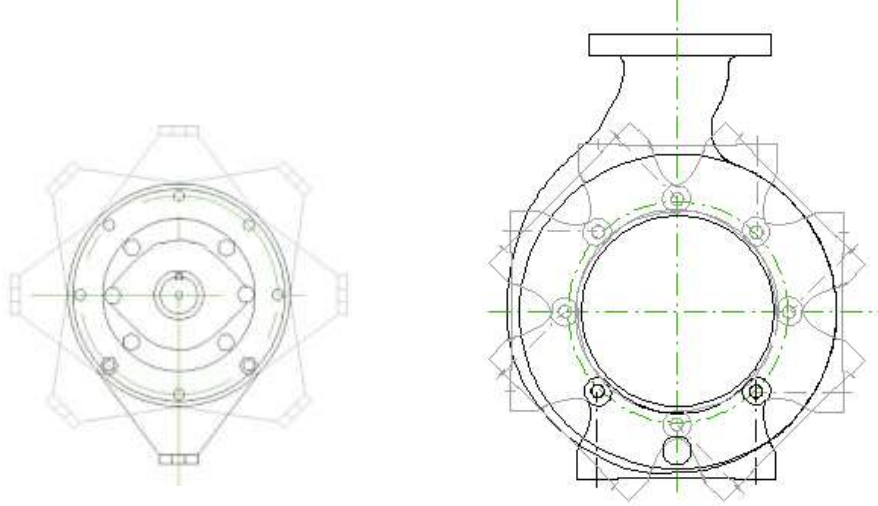


1.800.375.9470



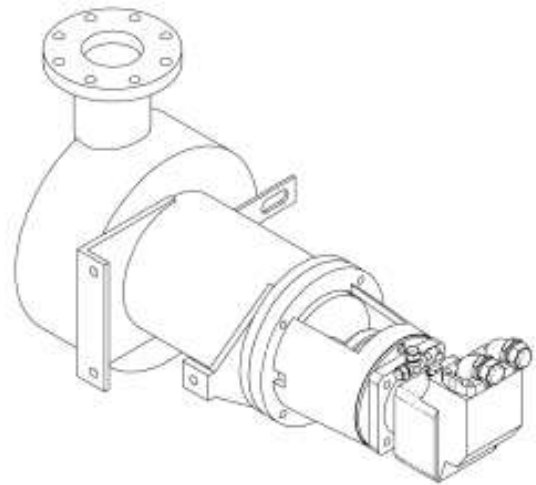
Changing Pump Discharge Orientation:

The pump discharge can be easily rotated in 45 degree increments to match piping. This is accomplished removing the mounting feet and moving them to a different position on the pump frame. This avoids removing the pump casing and having to reset impeller clearances. Front and rear feet can even be placed different positions if required.



Hydraulic Drive Adapter:

Installation of our optional hydraulic motor adapter can be easily done because of the integral mounting flange on the bearing housing.



Shaft Seal Arrangements:

The pump is available with a variety of shaft seals.

- Product lubricated Tungsten Carbide mechanical seal.
- Oil lubricated Tungsten Carbide mechanical seal with 2 oz. oil bottle.
- Optional stainless oil reservoir protects oil lubricated mechanical seal from dry running.
- Lip Seals - pressurized oil or grease lubricated (Buna or Teflon)
- Graphite Packing

Special Coatings:

Special coatings are available for corrosive service.

- Halar – (Impeller Only)
- Zpex – (All Wet End Components)

Bearing Frame:

- Standard with grease lube bearing housing rated to 100 HP.
- Optional oil lubricated bearing frame.
- 8x6x14 size available with 300 HP bearing frame.

Complete Packages or Special Modifications Available:



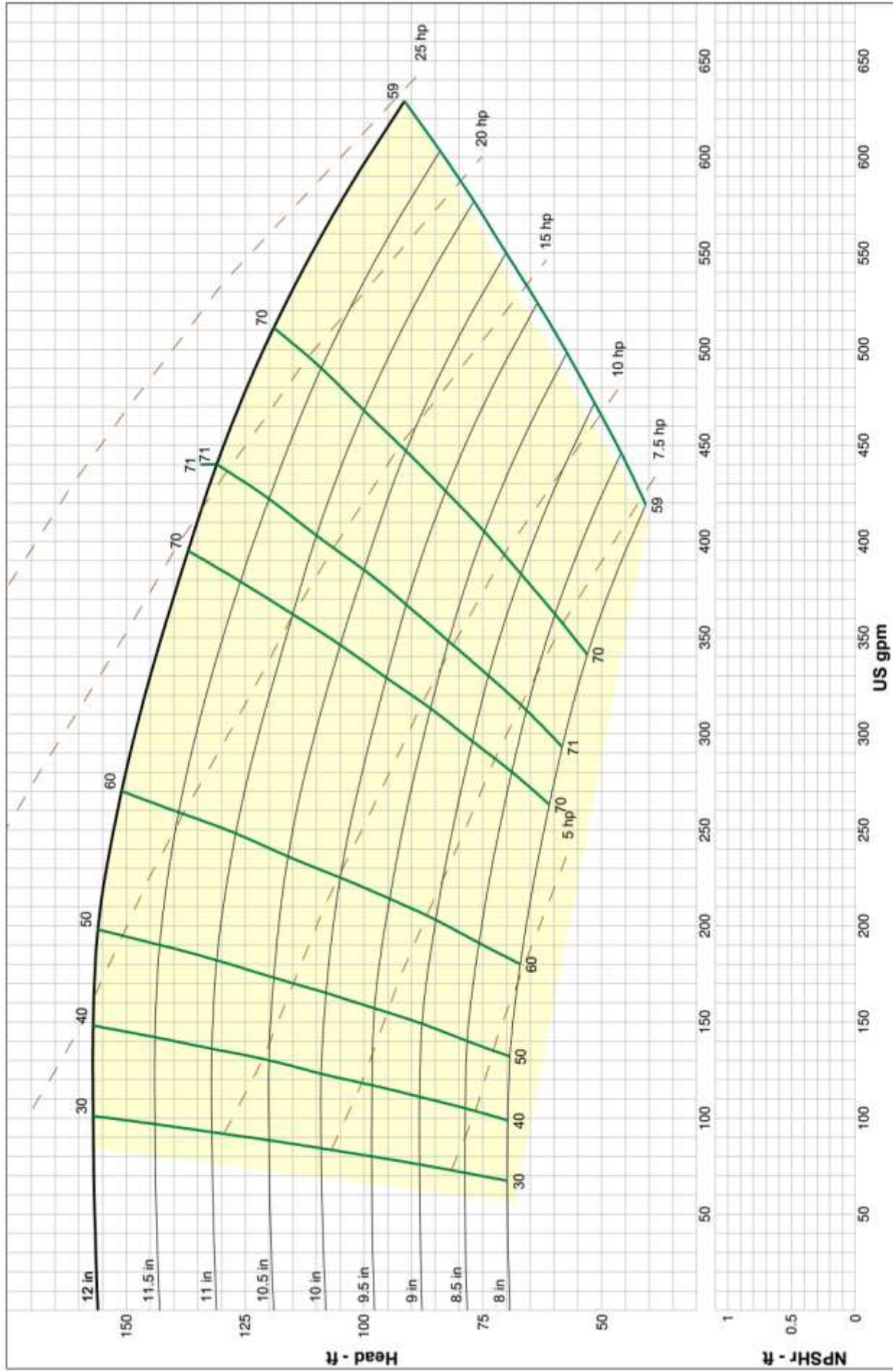
Cementing Pump w/ Speed Increasers and Lip Seal Lubrication System



Truck Mounted Cementing Pump w/ Hydraulic Drive



Cementing Unit Pump w/ IEC Motor and Oil Lube Mechanical Seal Lubrication System and Oil Lube Bearings

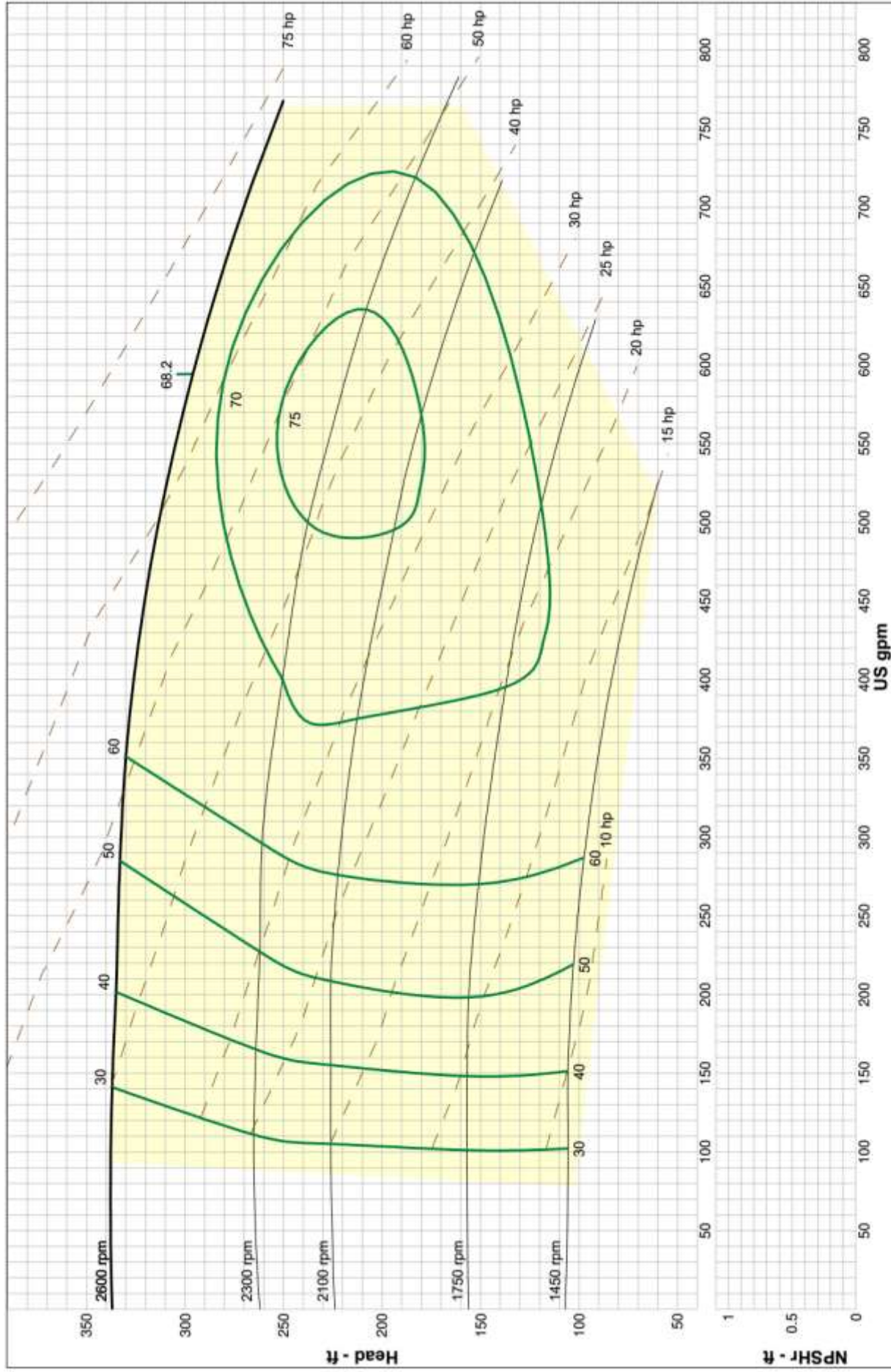


Size: 350.205 4x4x12
 Speed: 1750 rpm
 Dia: 12 in
 Impeller: 350.20501

Duncan Equipment Company
 Catalog: Halliburton Centrifugal Pumps (2), Vers 1
 Halliburton - 1800

Company: Blackhawk Industrial
 Name:
 9/14/2016



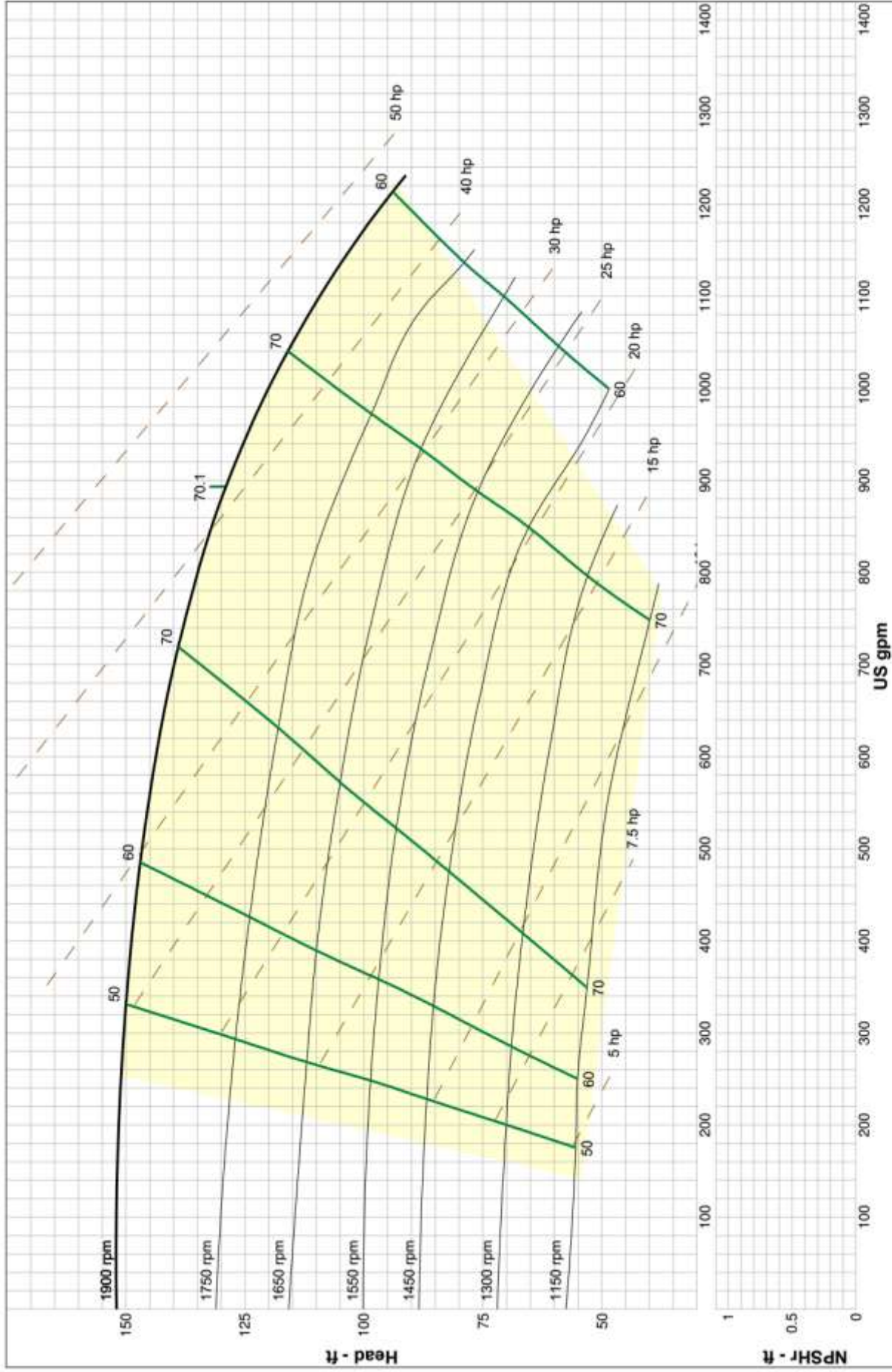


Size: 350.205 4x4x12-12
 Speed: 2600 rpm
 Dia: 12 in
 Impeller: 350.20501

Duncan Equipment Company
 Catalog: Halliburton Centrifugal Pumps (2), Vers 1
 Halliburton - Adjustable

Company: BlackHawk Industrial
 Name:
 9/14/2016



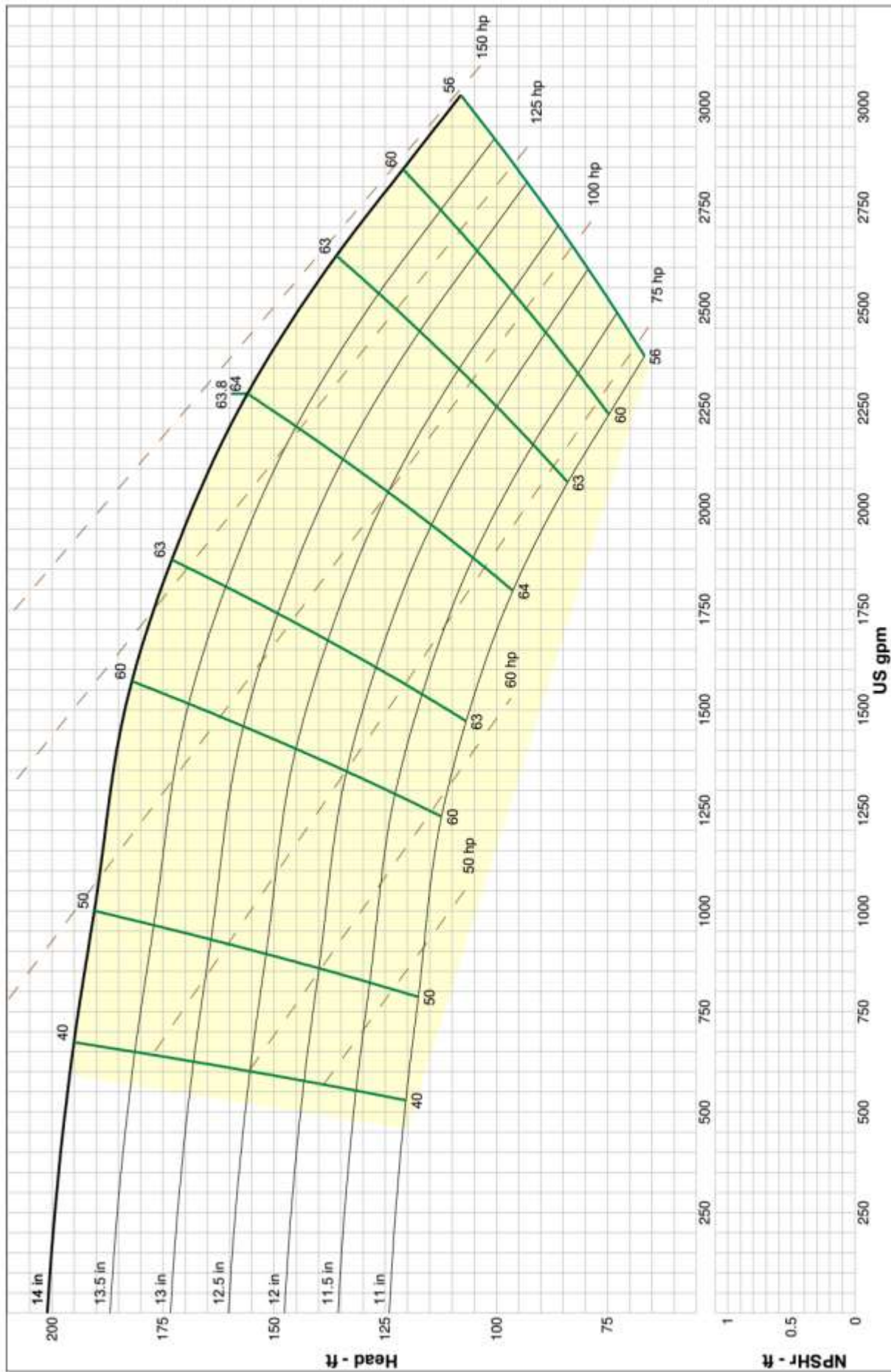


Company: BlackHawk Industrial
 Name:
 9/14/2016

Duncan Equipment Company
 Catalog: Halliburton Centrifugal Pumps (2), Vers 1
 Halliburton - Adjustable

Size: 350.1244 6x5x11-11
 Speed: 1900 rpm
 Dia: 11 in
 Impeller: 350.12431





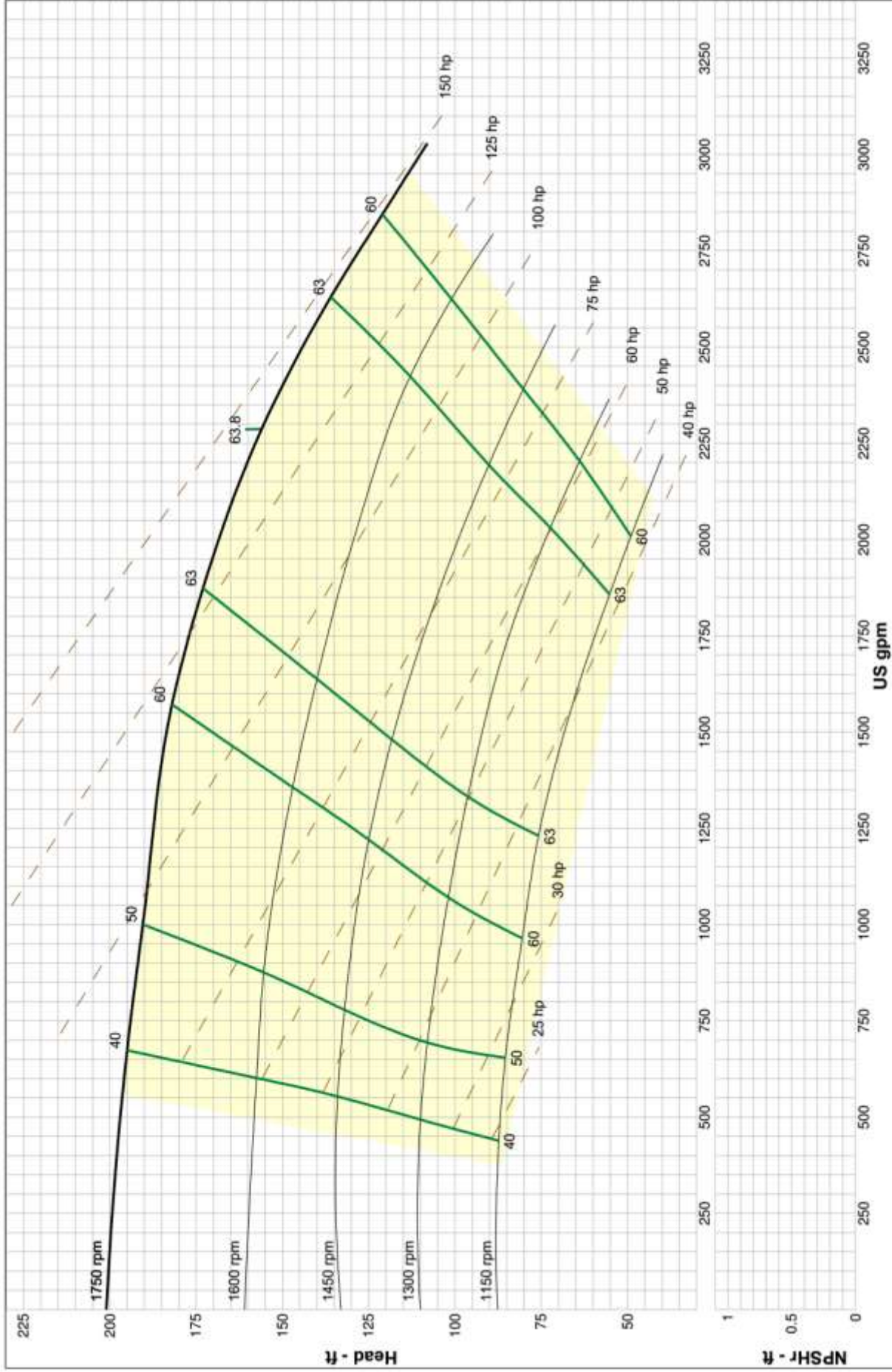
Company: BlackHawk Industrial
 Name:
 9/14/2016

Duncan Equipment Company
 Catalog: Haliburton Centrifugal Pumps (2), Vers 1
 Haliburton - 1800

Size: 350.202 8x6x14
 Speed: 1750 rpm
 Dia: 14 in

Impeller: 350.202





Company: BlackHawk Industrial

Name:

9/14/2016

Duncan Equipment Company

Catalog: Halliburton Centrifugal Pumps (2), Vers 1

Halliburton - Adjustable

Size: 350.202 8x6x14-14

Speed: 1750 rpm

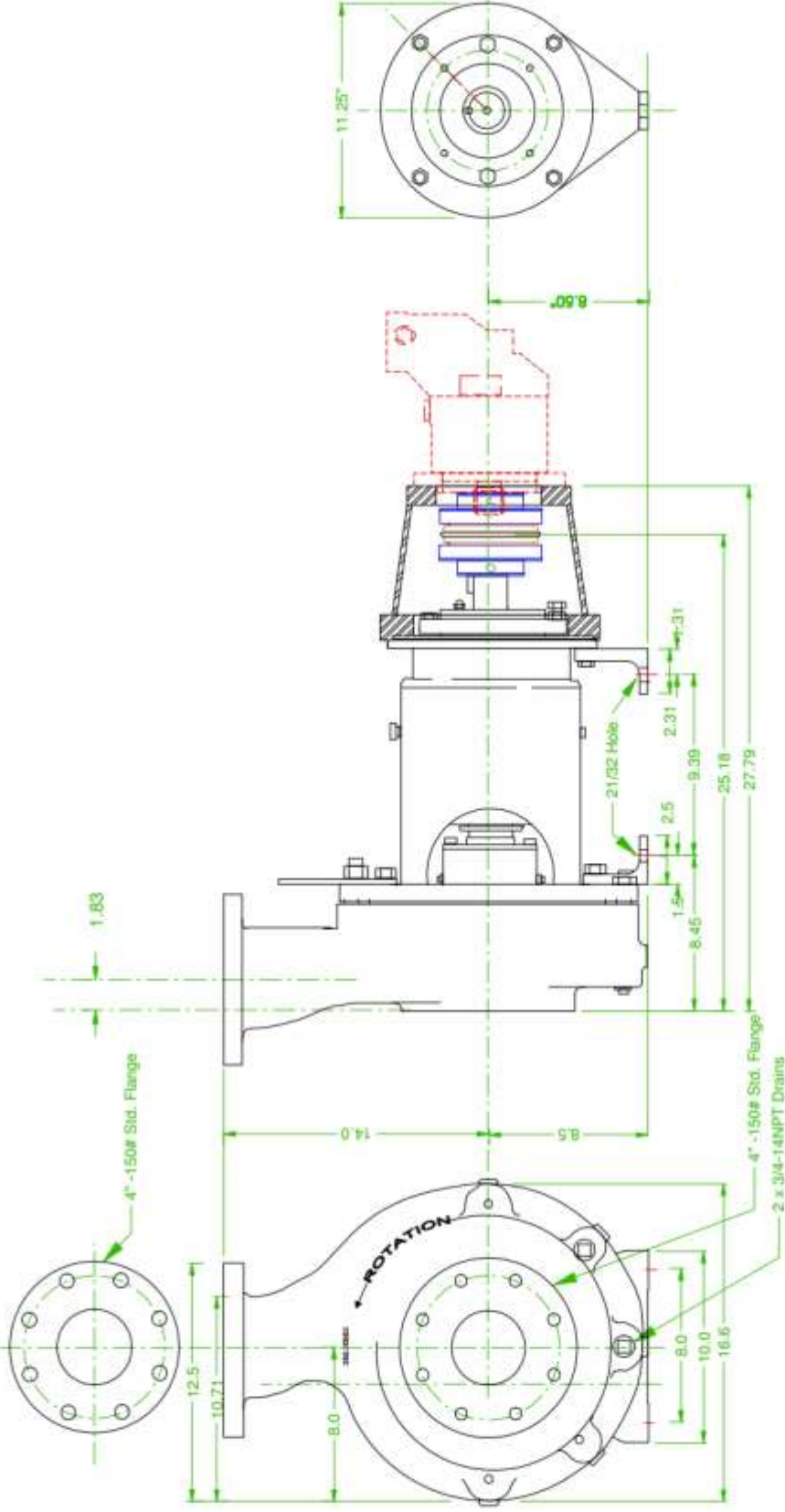
Dia: 14 in

Impeller: 350.202



Copyright - BlackHawk Pumps & Services

PRODUCTS AND TECHNOLOGY DEVELOPED IN THE U.S.A. ARE DEEMED TO BE OF U.S. ORIGIN AND THEREFORE SUBJECT TO U.S. EXPORT CONTROL LAWS. THE EXPORT OR REEXPORT OF U.S. TECHNOLOGY BY ANY MEANS INCLUDING DATA TRANSFER IS PROHIBITED EXCEPT IN ACCORDANCE WITH U.S. LAW.



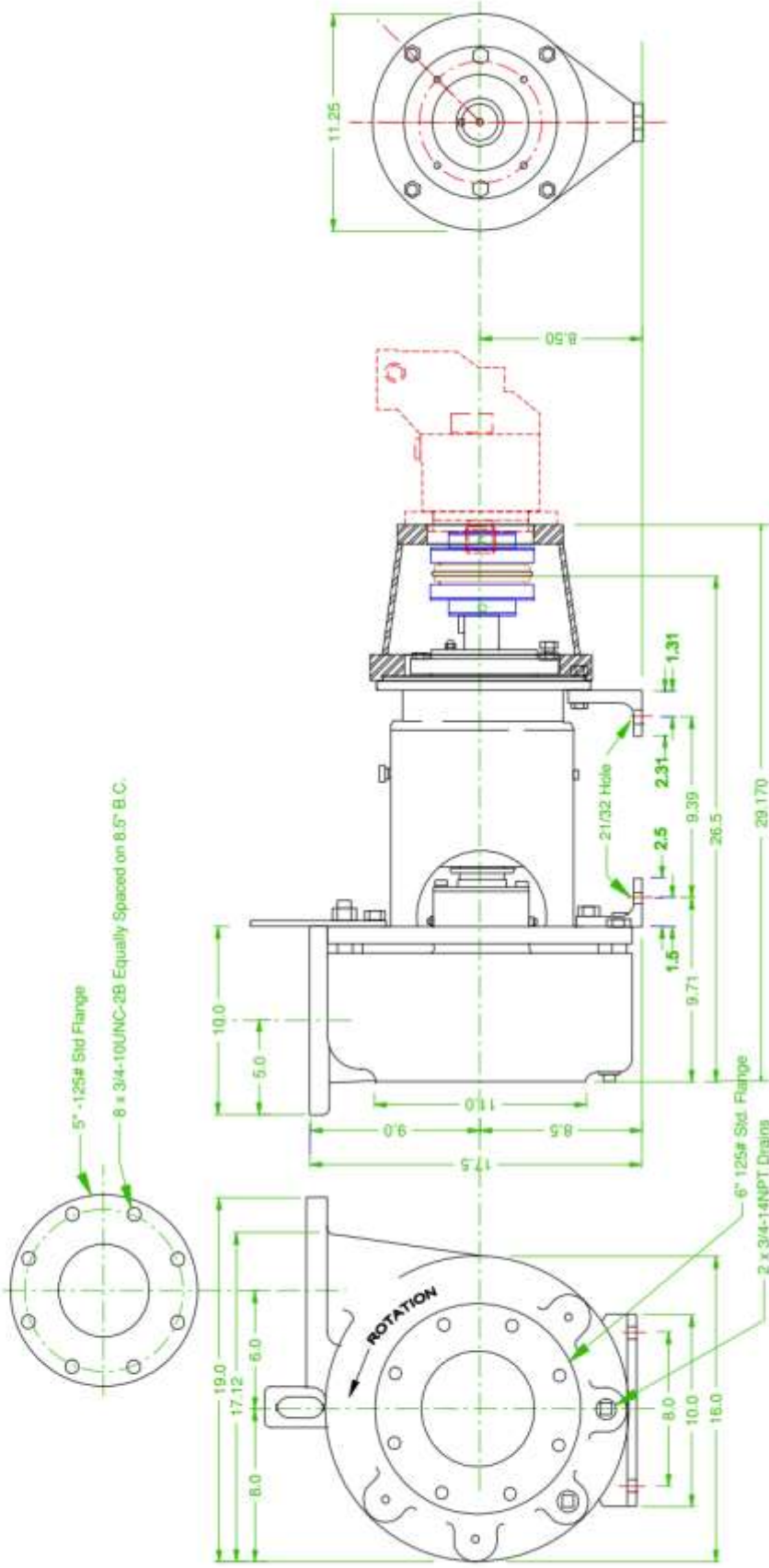
NOTE:	TITLE	4 x 4 x 12 100 HP Frame RH Rotation w/ Hydraulic Adapter	HP 350.205	Quantity	1
UNLESS SPECIFIED, MACHINING TOLERANCE .X +/- .015 .XX +/- .010 .XXX +/- .005 ANGLES +/- 1/2 DEG	Applicable For Models:		List Update Authorization Here.		
	350.205 350.2056		Approved By:	DDMMYY	
			Drawn:	GRH	11/24/2008
			Checked:		
			Revision 1:		
Specified Mat:		Revision 2:		Revision 3:	
Fresh Material of Material					
Audit Scaling CAD data without consulting engineer					
				Sheet	Job Number
				Size A	Scale: None



1005 S. 2nd Street Duncan, OK. 73533 U.S.A.
 Phone: 405-688-2300 Fax: 405-488-2341
 www.blackhawkid.com

Copyright - BlackHawk Pumps & Services

PRODUCTS AND TECHNOLOGY DEVELOPED IN THE U.S.A. ARE DEEMED TO BE OF U.S. ORIGIN AND THEREFORE SUBJECT TO U.S. EXPORT CONTROL LAWS. THE EXPORT OR REEXPORT OF U.S. TECHNOLOGY BY ANY MEANS INCLUDING DATA TRANSFER IS PROHIBITED EXCEPT IN ACCORDANCE WITH U.S. LAW.



NOTE:	TITLE		6 x 5 x 11 100 HP Frame RH Rotation w/ Hydraulic Adapter		HP 350.1240	Quantity	1
	Applicable For Models:		List Update Authorization here:				
UNLESS SPECIFIED, MACHINING TOLERANCE	350.1241		Approved By:	DDMMYY			
	350.1242		Drawn:	GRH	11/24/2008		
	350.1243		Checked:				
	350.1244		Revision 1:				
			Revision 2:				
	Specified Fit:		Revision 3:				
	Fresh Material of Material		Sheet				
	Avoid Scaling CAD data without consulting supervisor		Sketch A				
			Scale: None		Job Number		
<div>BLACKHAWK PUMPS & SERVICES</div> <div>1005 S. 2nd Street Duncan, OK 73533 U.S.A. Phone: 405-688-2300 Fax: 405-488-2341 www.blackhawkid.com</div>							

PRODUCTS AND TECHNOLOGY DEVELOPED IN THE U.S.A. ARE DEEMED TO BE OF U.S. ORIGIN AND THEREFORE SUBJECT TO U.S. EXPORT CONTROL LAWS. THE EXPORT OR REEXPORT OF U.S. TECHNOLOGY BY ANY MEANS INCLUDING DATA TRANSFER IS PROHIBITED EXCEPT IN ACCORDANCE WITH U.S. LAW.



PRODUCTS AND TECHNOLOGY DEVELOPED IN THE U.S.A. ARE DEEMED TO BE OF U.S. ORIGIN AND THEREFORE SUBJECT TO U.S. EXPORT CONTROL LAWS. THE EXPORT OR REEXPORT OF U.S. TECHNOLOGY BY ANY MEANS INCLUDING DATA TRANSFER IS PROHIBITED EXCEPT IN ACCORDANCE WITH U.S. LAW.





Available Options:

- Graphite Packing
- Mechanical seal
- Oil Lubricated Mechanical Seal
- Oil Lubricated Teflon Lip Seals
- Halar Coated Impeller
- Hydraulic Motor Adapter
- Electric & Engine Driven Units

Potential Applications:

Oilfield Service Applications

- Blending
- Cementing
- Fracturing
- Charge Pumps
- Drilling Mud

General Industrial

- Waste Water Treatment

Sludge Slurry Applications

- Drilling Mud
- Sewage Sludge
- Lime
- Industrial Waste
- Hydromulch
- Sand & Silt Laden Water



BLACK HAWK
PUMPS & SERVICES

88 South C Street Duncan, OK. 73533 USA

Ph: 800.375.9470 Fax: 580.255.6844

pumps@blackhawkid.com

www.BHID.com